

Session Name: 6-14-2016 7-08 PM

Date Created: 6/14/2016 6:35:22 PM

Active Participants: 79 of 79

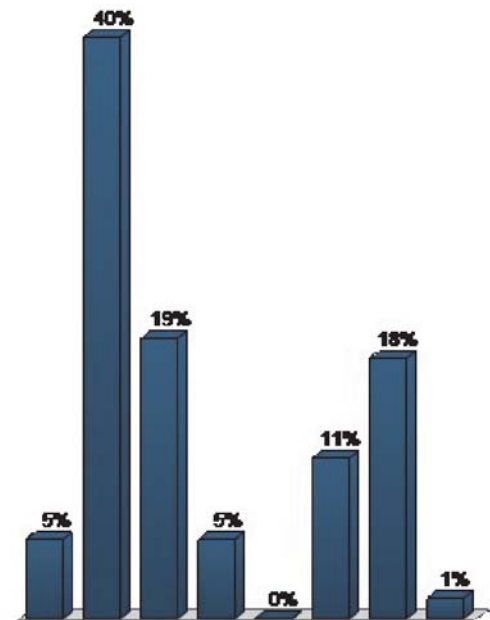
Average Score: 0.00%

Questions: 7

Results by Question

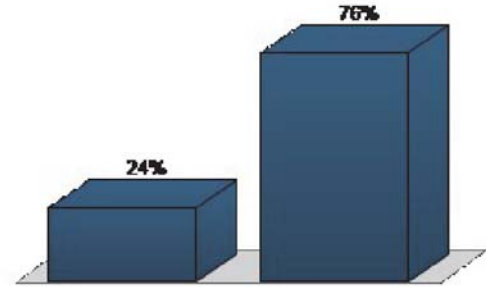
1. 1. I live in the following area: (select one) (Demographic Assignment)

	Responses	
	Percent	Count
Hillside neighborhood	5.48%	4
Middle Shook's Run neighborhood	39.73%	29
Patty Jewett neighborhood	19.18%	14
Old North End neighborhood	5.48%	4
Chelton/Palmer Park neighborhood	0%	0
Downtown Colorado Springs	10.96%	8
Elsewhere in Colorado Springs	17.81%	13
Elsewhere in El Paso County (outside CO springs)	1.37%	1
Totals	100%	73



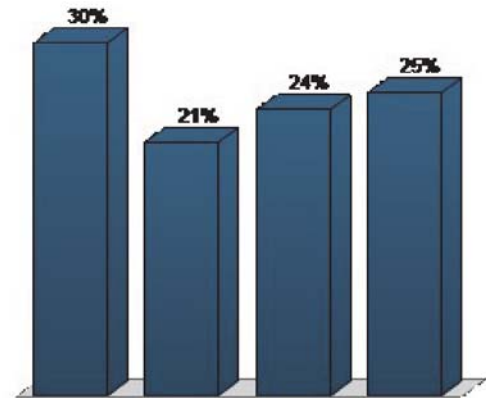
2. 2. Does you property connect directly to the Shook's Run channel? (select one) (Multiple Choice)

	Responses	
	Percent	Count
Yes	24.32%	18
No	75.68%	56
Totals	100%	74



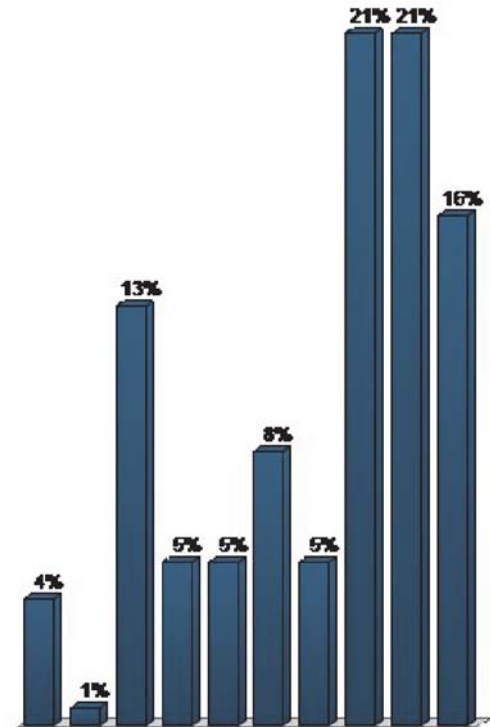
3. 3. How many of the prior Shooks Run public meetings have you attended? (select one) (Multiple Choice)

	Responses	
	Percent	Count
This is the first meeting I have attended	29.58%	21
I attended one prior meeting	21.13%	15
I attended two prior meetings	23.94%	17
I attended all three prior meetings	25.35%	18
Totals	100%	71



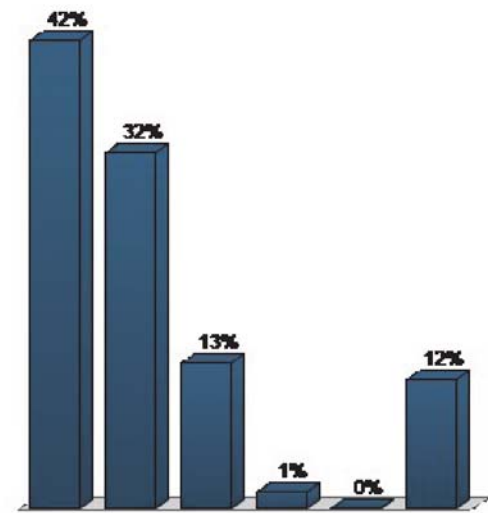
4. 4. How did you hear about this public workshop? (select all that apply) (Multiple Choice - Multiple Response)

	Responses	
	Percent	Count
Newspaper article	3.95%	7
Radio/TV News Report	0.56%	1
Sign in a park or along trail	12.99%	23
Social Media (Facebook, Twitter)	5.08%	9
Project Website	5.08%	9
Flyer	8.47%	15
Newsletter	5.08%	9
Email from an organization	21.47%	38
Postcard by mail	21.47%	38
Word of mouth	15.82%	28
Totals	100%	177



5. 5. At a high level, the project team has done a good job listening to your input and reflecting it in the Recommended Theme? (select one) (Multiple Choice)

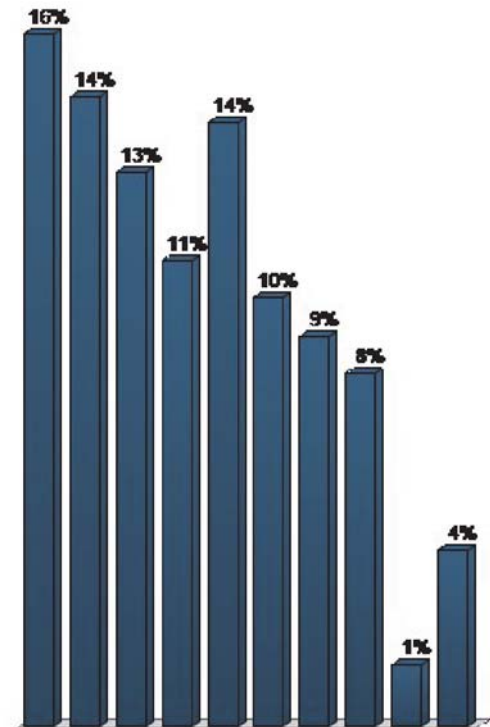
	Responses	
	Percent	Count
Strongly agree	42.03%	29
Agree	31.88%	22
Neutral	13.04%	9
Disagree	1.45%	1
Strongly disagree	0%	0
I don't know, I am unsure.	11.59%	8
Totals	100%	69



6. 6. With the Recommended Theme, any improvements will have impacts on private property (through easements, or partial or full acquisition). Under which circumstances would you support private property impacts? (choose all that apply) (Multiple Choice - Multiple Response)

	Responses	
	Percent	Count
For public safety improvements related to flood/erosion impacts	15.9%	55
For stream channel maintenance by the City	14.45%	50
In order to provide room for bridge replacements	12.72%	44
To minimize overall project costs & speed construction	10.69%	37
To provide for a well-	13.87%	48

functioning operation of a natural, healthy creek		
To install new parks and greenway features	9.83%	34
To create amenities, destinations, and other quality of life improvements	8.96%	31
To create new or enhanced transportation connections	8.09%	28
None of the above	1.45%	5
I don't know, I would like to learn more	4.05%	14
Totals	100%	346



7. 7. Which of the following types of funding strategies would you favor, to speed up construction of Shooks Run enhancements & improvements? (select all that apply) (Multiple Choice - Multiple Response)

	Responses	
	Percent	Count
Special taxing districts	7.82%	23
Public and private grants / foundations	14.63%	43
Public federal and state funding	14.97%	44
Local public funding (City, PPACG, etc.)	13.95%	41
Dedicated funding sources (special bonds, utility fees, as example)	9.18%	27
Creation of an Urban Renewal Authority area	8.5%	25
Private developer financing	8.5%	25
Public – private partnerships (example, between City and developer)	12.93%	38
None of the above	0.34%	1
All of the above	9.18%	27
Totals	100%	294

